
HM-BT-VIN

HART Modem – Bluetooth Voltage Input

Benefits:

- Access hard to reach instrumentation from the ground
- Easy instrument configuration using PDA's or PC's without bulky modules or wires
- Permanent in-field installation preserves explosion proof environment
- Explosion proof CSA, Class I Groups B, C and D. Class II Groups E, F and G.

Feature Highlights:

- Bluetooth v1.2
- Reliable wireless communication up to 100 ft (30m)
- Internal antenna
- Powered via 12Vdc to 36Vdc
- Bluetooth Activity and Power LEDs visible through glass cover
- Meets HART Physical Layer Spec HCF_SPEC-54
- High security 128 bit encryption
- Compact size 4.5" x 4.0" x 3.75" (115mm x 100mm x 95mm)
- Type 4X Enclosure.
- Conduit sizes ½ inch NPT (standard) and ¾ inch NPT (optional)
- HART Modem Test Program included for PC and Pocket PC PDA
- Optional Mounting Bracket available (BR2-KIT)



HM-BT-VIN

HART Modem – Bluetooth Voltage Input

Specifications:

Enclosure

Material	Blue painted aluminum
Dimensions	4.5" x 4.0" x 3.75" (115mm x 100mm x 95mm)
Weight	1.3 lbs (0.54 kg)
Interface	Conduit sizes ½" NPT or ¾" NPT
Certifications	Explosion proof CSA, Class I Groups B, C, D. Class II Groups E, F, G Type 4X

HART

Interface	Capacitive coupling
Output	600 mVpp
Leakage	< 10 uA
Connections	Across loop resistor or HART field device
Specifications	HART 4, HART 5, HART 6, HART 7 HART Physical Layer Spec HCF_SPEC-54

Bluetooth

Specifications	Bluetooth v1.2
Frequency	2.4 GHz
Class 1 Master Distance	100' (30m)
Class 2 Master Distance	25' (7.6m)

Power Input

Voltage	12Vdc to 36Vdc
Power	600 mW

Environmental

Operating Temperature	-20 degC to 60 degC (-4 degF to 140 degF)
Storage Temperature	-40 degC to 85 degC (-40 degF to 185 degF)
Humidity	0% to 99% (non-condensing)

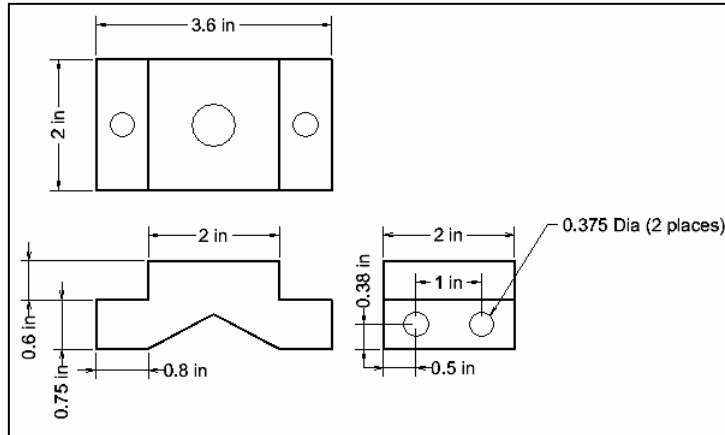
BR2-KIT
Bracket Kit
2 Inch Pipe

Feature Highlights:

- Designed for use with the HM-BT-VIN
- Mount the HM-BT-VIN directly to 2" piping
- 0.375" (9.5mm) holes for alternate mounting schemes
- Size 3.6" x 2.0" x 1.35" (91mm x 51mm x 34mm)
- 0.075" (2mm) thick stainless steel
- 1 Year warranty



Kit Contents



Bracket Dimensions